



MAXIME

SERVIÇOS INDUSTRIAIS

About

MAXIME SERVICES was born with the mission of satisfying to please our customers with excellence and, for that, we have specialized professionals with great experience in the market.

We have a modern structure based on an administration in tune with the main transformations of the globalized world, guaranteeing customization in our services, in addition to the concern of using advanced technologies that allow the optimization of processes.

Our success, through the fulfillment of strategic objectives, absolutely depends on our commitment to the practice of our values.

1 Honesty, integrity and austerity

2 Quality and productivity

3 Innovation and creativity

4 Respect and development of employees

5 Passion and constancy at work



THE HISTORY OF MAXIME SERVICES

Our history has been built over 11 years, having in its staff, professionals with long experience in the industrial area. The company focuses on providing services with quality and within the deadlines established in our contracts.

In tune with the customer's needs, it seeks to guarantee a unique and differentiated service, in order to reduce costs and add value.

During its history, MAXIME executed small, large-scale projects, involving a high standard of complexity, meeting very demanding levels of quality for its customers.

SECURITY & SAFETY ON WORK

IT IS A MATTER OF HONOR

Ensuring the safety of our employees during work is a factor that permeates all the work performed by MAXIME.

Ensuring a pleasant, safe, organizational environment that values the physical integrity of our professionals is a priority issue in our company. To this end, our integrations are carried out with the monitoring of safety engineers, where all employees receive the quality PPE necessary for the best execution of the work, in addition to conducting frequent training at our construction sites to improve the activities performed, ensuring the safety of those involved. The sum of these actions guarantees the completion of our works, reaching META ZERO ACCIDENTS WITH REMOVAL.

PCMSO NR 07

Occupational health medical control program

PPRA NR 9

Environmental risk prevention program

NR 18

Working conditions and environment in the construction industry

NR 33

Safety and health in work in confined spaces

NR 35

Work at height training



DAILY DIALOGUE OF SAFETY

Standards training
required by the customer



Integration training



AREAS OF EXPERTISE

MAXIME stands out for planning, executing and coordinating projects in the following areas:

- A Industrial assembly**
Installation of equipment, metal structures, pipes, silos, rotary kilns, mills, storage tanks and exchangers.
- B Fabricação de calderaria**
Silos, metallic structures, pipes and tanks.
- C Welding engineering**
Preparation of all technical documentation of welding and inspection, ensuring All traceability of materials in manufacturing and welding.
- D Rotating oven assembly**
Welding processes to improve quality and eliminate welding variations with application in the submerged arc process, guaranteeing and welding quality, extending the life of the equipment.
- E Oven ferrule exchange**
Cutting and removal of the determined segment, placement of another ferrule with alignment and submerged arc welding.
- F Factory maintenance and refurbishment**
Recovery by welding equipment with cracks, changing equipment, changing pipes and heat exchanger filters.
- G Modernization of the manufacturing unit**
Exchange of obsolete equipment for more modern equipment, with energy savings and increased productivity.
- H Equipment recovery**
Equipment that is compromised by fatigue and cracks.
- I Welding of vertical mills**
Assembly and welding of vertical mills type ok.
- J Change of mill ferrules**
Removal of tired and deformed ferrules by new ferrules and tread rings. Aligning the furnace and welding by an automated process.

A large-scale industrial construction project is shown under a grey, overcast sky. The scene is dominated by a complex network of steel pipes and concrete structures. Extensive scaffolding is erected around the main components, indicating ongoing work. A prominent yellow crane is visible on the right side. In the foreground, a yellow piece of machinery with the number '540' is partially visible. The overall atmosphere is one of heavy industrial activity.

WELDING APPLICATIONS

MAXIME stands out for providing services in the field of welding engineering, preparing all technical documentation to perform the services in accordance with national and international standards. In the area of welding execution, we have know-how for welding carbon steels, alloy steels, austenitic stainless steels, ferritic stainless steels, duplex stainless steels, copper alloys, copper, aluminum and nickel alloys.



LOCATE HEAT TREATMENT





CHANGE OF TREAD AND FERRULE



**WELDING CARRIED OUT IN OVEN CLINQUER BY
SAW PROCESS**



OVEN WELDING WITH SUBMERSED ARC



OVEN WELDING WITH SUBMERSED ARC

PROFESSIONALISM AND QUALIFICATION

We provide professional and qualified labor with the respective Registration and Qualification of welders - RQS, as well as the Registration and Qualification of Welding Procedures - RQPS, according to the requirements of the ASME standard - Boiler and Pressure Vessel Code - Section IX or AWS D1.1, for the operational tasks, routines and procedures necessary to perform welding services.

We provide consulting services in welding and qualification of third manpower, as well as the qualification of welders for the industry in the welding processes: SMAW, SAW, GTAW, GMAW, FCAW and SW.



QUALITY ASSURANCE

MAXIME Serviços is able to carry out processes that guarantee the quality and structural integrity and verification of non-conformities in welded joints. It has competence in assessing the integrity of components such as pressure vessels, industrial pipelines, pipelines, naval and oceanic structures, rises, among others.

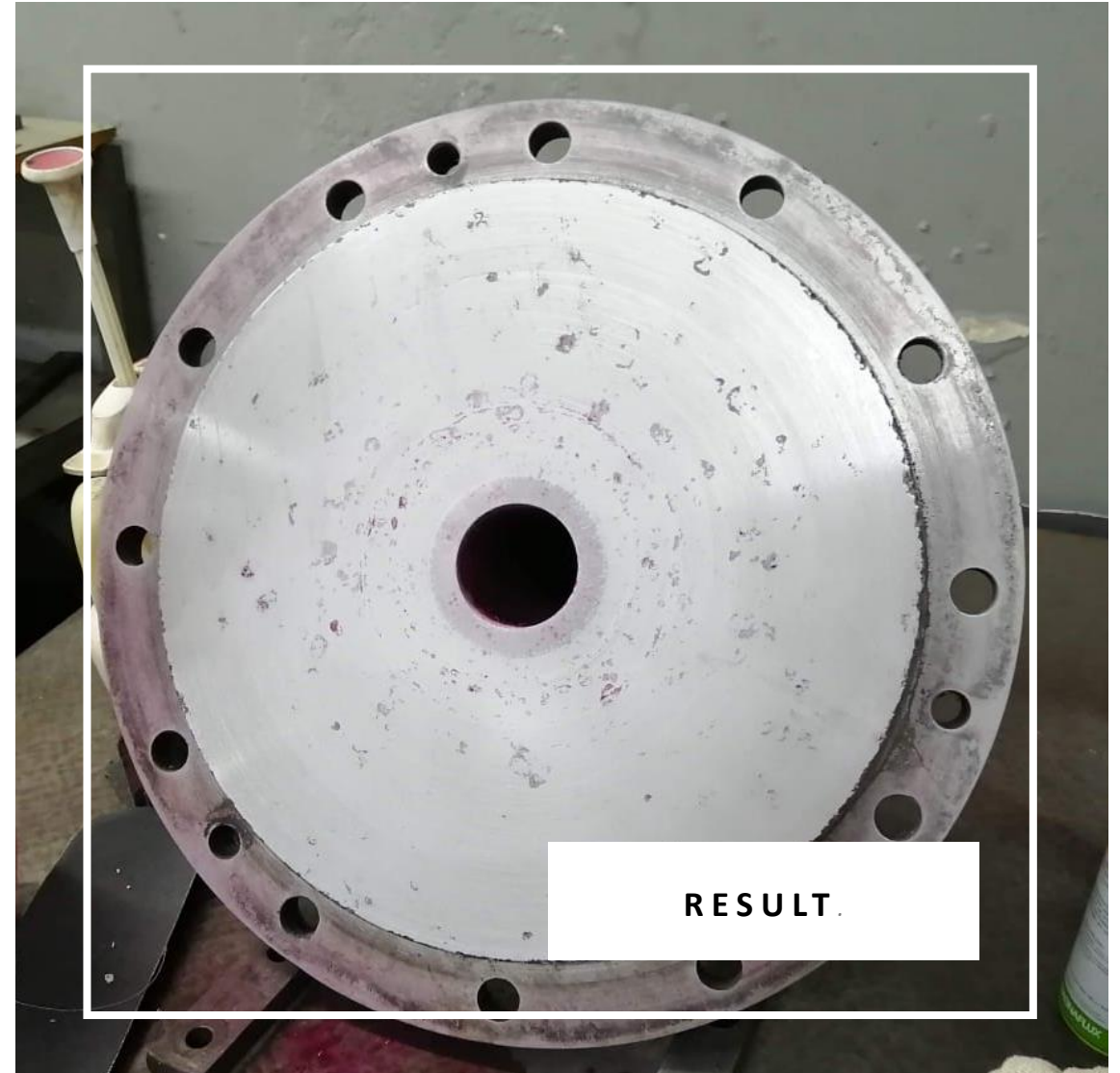
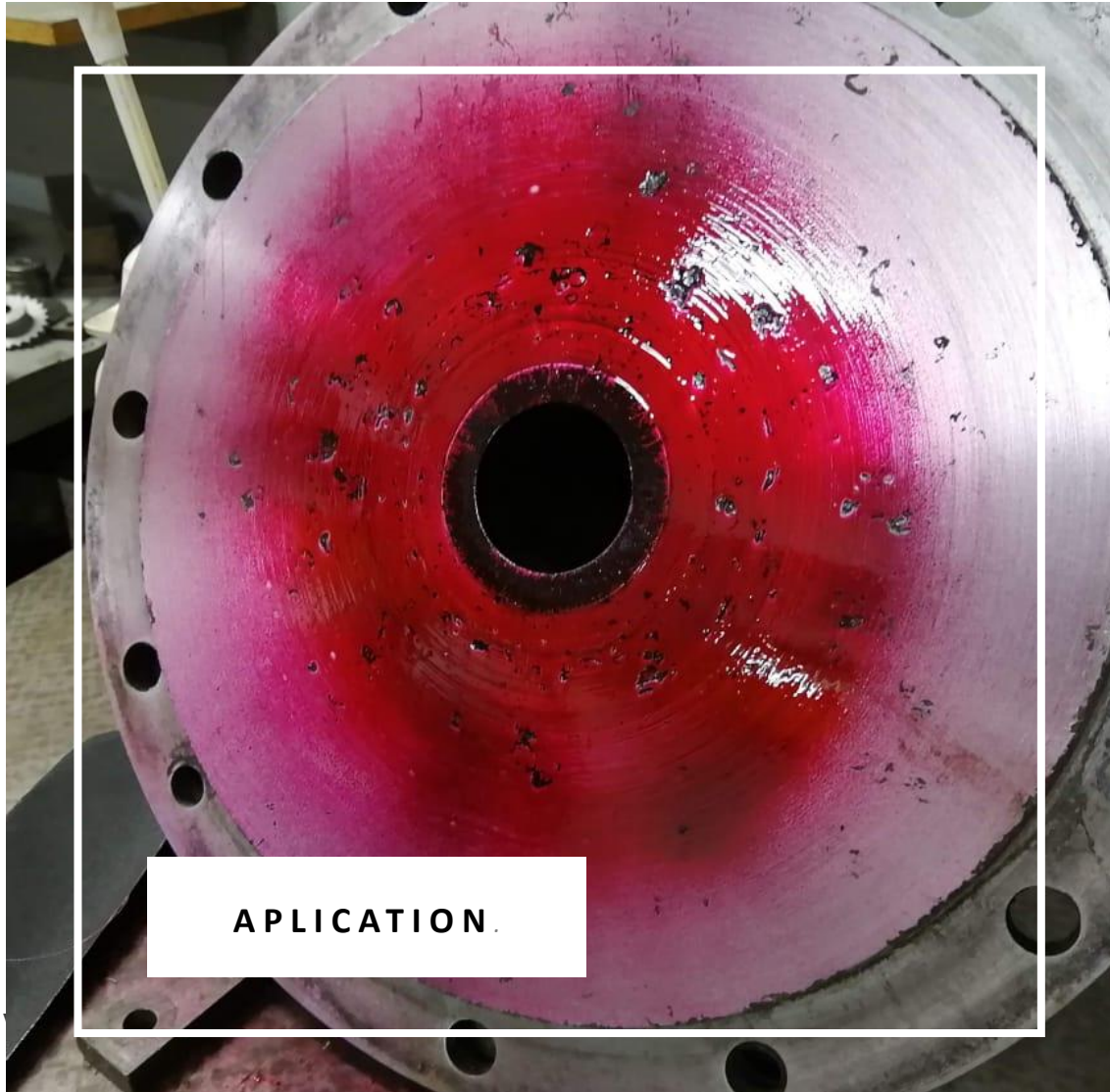
We carry out mechanical tests necessary for the evaluation of the structural integrity of welded components. Our welding procedures are prepared according to AWS D1.1 ASME IX, API 1104, API 650, ISO 5817, ISO 9606 and DIN EN 29692 standards.



Ultrasonic inspection in clinker oven welding



PENETRATING LIQUID TEST



FINAL CONSIDERATION

MAXIME SERVICES is a company that works with passion, believing in work and in an ethical posture. We seek continuous improvement and the overcoming of standards of excellence and quality.

Our philosophy is driven by the desire to conquer and satisfy the desires and needs of our customers, to continuously generate economic value and to participate in the social development of the community in which we operate. We can synthesize our philosophy in a simple mission: "To satisfy and please our customers with excellence".

MAXIME SERVICES is the right company to carry out the scopes presented due to its competence, commitment, seriousness and experience.

Your company's requests and the solutions that will be presented by **MAXIME SERVICES** perfectly match our business, which since its foundation has been specialized in welding equipment engineering.

We are waiting for your contact to close this partnership.

MAXIME SERVICES - INDUSTRIAL SERVICES



Name comercial

MAXIME - SOLDAGEM INDUSTRIAL

Company name

MAXIME MECÂNICA INDUSTRIAL LTDA

Industry

PRESTAÇÃO DE SERVIÇOS EM INDÚSTRIAS

OUR CLIENTS



biosev



CSN
Companhia Siderúrgica Nacional



FLSMIDTH



GERDAU



Votorantim
Cimentos



LafargeHolcim



mcm
montagens industriais



PMC
SERVIÇOS



PMI



Tecnocyl
Ingeniería



GRUPO
TECNOMONT



QUALIFIED TEAM AND READY TO SERVICE YOU



CONTACT

OUR COMUNICATION CONTACTS



adm@maximeservicos.com.br



www.maximeservicos.com.br



37 9 8816.2027



37 3351.7192 | 37 9 8805.2027



Rua Acre, 688 – Bairro Calcita
Arcos – MG Cep.: 355888-000

BRASIL

